



***MORE QUALITY,
MORE POWER,
MORE CAPACITY!***



Swingmaster was started in 1985 by Dan A. Grammatas. Mr. Grammatas was employed by Pettibone Corporation from 1962 until 1985. He started as an assembler and when he left Pettibone his position was Plant Manager in charge of all manufacturing and assembly of the Mobile Equipment which included the Speedswing line.

In January of 1986 the Chicago Pettibone plant closed and filed bankruptcy. This was a great opportunity for Mr. Grammatas to put together a work force of former Pettibone employees to begin the Swingmaster Corporation.

Mr. Grammatas has the best of the best qualified people from Pettibone with many of them having over 20 years' experience in the speedswing product line.

Swingmaster employs 30 plus people which many have over 40 years of experience.

Swingmaster takes great pride in the building of their Swingmaster products and our Customer is always first.



**11415 Melrose Avenue
Franklin Park, Illinois 60131**

T: (847) 451-1224

F: (847) 451-1247

E: sales@swingmastercorp.com

www.swingmastercorp.com

SWINGMASTER™
Model 181LTC



Model:
 Swingmaster Model 181LTC (Large Tilt Cab)

Capacity:
 10,000 pound lift and carry capacity
 180° swing (90° each side of center)

Dimensions:
 GVW 34,000 lbs. with hirail gear
 Length 205"
 Width 8'
 Height 119"

Powertrain:
 160hp diesel engine
 CAT/Cummins/John Deere
 6 speed power shift transmission

Maximum Travel Speeds (MPH on Rubber Tires):

Forward and Reverse	Low Range			High Range		
	1 st	2 nd	3 rd	1 st	2 nd	3 rd
	2.3	4	12	4.6	9	26

Steering System:
 Ridgid fram with steerable axles
 Control: Full power hydraulic
 Selectable modes: 4 wheel, crab, front only and rear only
 Turning Radius (Curb clearance) 20 feet 6 inches

Suspension System:
 9° oscillation on each side of center. Mechanical travel stops to limit oscillation for over the side lifting and hirail use.

Service Brakes:
 Outboard style caliper disc brakes
 19" diameter disc
 Dual circuit system, air over hydraulic

Fuel Tank Capacity:
 52 Gallons

Operator Cab:
 Full width crew cab 3 Men
 Tilttable ROPS cab
 Adjustable operator seat, heater, defroster, windshield wipers, two doors with sliding windows, interior light and outside rearview mirrors.

Hydraulic System:
 75 gallon removable hydraulic tank with removable cleanout cover and lockable breather cap
 Primary and secondary pumps
 Primary and secondary control valves with manual override



11415 Melrose Avenue • Franklin Park, Illinois 60131
 T: (847) 451-1224 • F: (847) 451-1247 • E: sales@swingmastercorp.com
www.swingmastercorp.com

SWINGMASTER™
Model SL180-13



Model:
 Swingmaster SL180-13

Capacity:
 13,000 pound lift and carry capacity
 180° swing (90° each side of center)

Dimensions:
 GVW 40,000 lbs. with hirail gear
 Length 220"
 Width 102"
 Height 130"

Powertrain:
 190hp diesel engine
 CAT/Cummins/John Deere
 6 speed power shift transmission

Maximum Travel Speeds (MPH on Rubber Tires):

Forward and Reverse	Low Range			High Range		
	1 st	2 nd	3 rd	1 st	2 nd	3 rd
	2.3	4	12	4.6	9	26

Steering System:
 Rigid frame with steerable axles
 Control: Full power hydraulic
 Selectable modes: 4 wheel, crab, front only and rear only
 Turning Radius (Curb clearance) 20 feet 6 inches

Suspension System:
 10° oscillation on each side of center. Mechanical travel stops to limit oscillation for over the side lifting and hirail use.

Service Brakes:
 Outboard style caliper disc brakes
 19" diameter disc
 Dual circuit system, air over hydraulic

Fuel Tank Capacity:
 60 Gallons

Operator Cab:
 Full width crew cab 3 Men
 Tilttable ROPS cab
 Adjustable operator seat, heater, defroster, windshield wipers, two doors with sliding windows, interior light and outside rearview mirrors.

Hydraulic System:
 85 gallon removable hydraulic tank with removable cleanout cover and lockable breather cap
 Primary and secondary pumps
 Primary and secondary control valves with manual override



11415 Melrose Avenue • Franklin Park, Illinois 60131
 T: (847) 451-1224 • F: (847) 451-1247 • E: sales@swingmastercorp.com
www.swingmastercorp.com

SWINGMASTER™
Model SL180-20



Model:
 Swingmaster SL180-20

Capacity:
 20,000 pound lift and carry capacity
 180° swing (90° each side of center)

Dimensions:
 GVW 54,000 lbs. with hirail gear
 Length 243"
 Width 102"
 Height 130"

Powertrain:
 190hp diesel engine
 CAT/Cummins/John Deere
 6 speed power shift transmission

Maximum Travel Speeds (MPH on Rubber Tires):

Forward and Reverse	Low Range			High Range		
	1 st	2 nd	3 rd	1 st	2 nd	3 rd
	1.5	3.5	10	4.5	10	28

Steering System:
 Rigid frame with steerable axles
 Control: Full power hydraulic
 Selectable modes: 4 wheel, crab, front only and rear only
 Turning Radius (Curb clearance) 20 feet 6 inches

Suspension System:
 15° oscillation on each side of center. Hydraulic lockout system stops oscillation for over the side lifting and hirail use.

Service Brakes:
 Outboard style dual caliper disc brakes
 19" diameter disc
 Dual circuit system, air over hydraulic

Fuel Tank Capacity:
 60 Gallons

Operator Cab:
 Full width crew cab 3 Men
 Tilttable ROPS cab
 Adjustable operator seat, heater, defroster, windshield wipers, two doors with sliding windows, interior light and outside rearview mirrors.

Hydraulic System:
 85 gallon removable hydraulic tank with removable cleanout cover and lockable breather cap
 Primary and secondary pumps
 Primary and secondary control valves with manual override

Swings Drive System:
 Hydraulic motor, planetary gear box, double chain double sprocket



11415 Melrose Avenue • Franklin Park, Illinois 60131
 T: (847) 451-1224 • F: (847) 451-1247 • E: sales@swingmastercorp.com
www.swingmastercorp.com

SWINGMASTER™

Models 360RTC-20



360° Continuous Swing Models:
Swingmaster 360RTC-20

360RTC-20 Capacity:
20,000 lb. lift and carry capacity
360° continuous swing

Powertrain:
190hp diesel engine
CAT/Cummins/John Deere
6 speed power shift transmission

Maximum Travel Speeds (MPH on Rubber Tires):

Forward and Reverse	Low Range			High Range		
	1 st	2 nd	3 rd	1 st	2 nd	3 rd
	1.9	4.0	10.6	5.4	11.2	27

Steering System:
Rigid frame with steerable axles
Control: Full power hydraulic
Selectable modes: 4 wheel, crab, front only and rear only
Turning Radius (Curb clearance) 20 feet 6 inches

Service Brakes:
Outboard style caliper disc brakes
19" diameter disc
Dual circuit system, air over hydraulic

Fuel Tank Capacity:
50 Gallons

Operator Cab:
ROPS Cab with defroster fan, windshield wipers, adjustable seat, two doors with sliding windows, interior light and outside rearview mirror

Hydraulic system:
75 gallon removable hydraulic tank with removable cleanout cover and lockable breather cap
Primary and secondary pumps
Primary and secondary control valves with manual override



11415 Melrose Avenue • Franklin Park, Illinois 60131
T: (847) 451-1224 • F: (847) 451-1247 • E: sales@swingmastercorp.com
www.swingmastercorp.com

SWINGMASTER™

Dual Rail Brush



The Swingmaster Dual Rail Brush removes oxidation and carbon deposits from the running surfaces of both rails to ensure proper track signal operation of crossing gates.

The Swingmaster Rail Brush is equipped with a hydraulic power unit to operate 2 self adjusting rail brushes. This unit can be towed by any type of Hirail equipment and performs best at speeds of 15-20 mph.

Dimensions:

Weight 2,500 lbs.
Length 72"
Width 80"
Height 35" from top of rail
Rail wheel 10" in diameter

Powertrain:

25 horse power diesel engine

Hydraulic System:

Dual hydraulic system with heat exchange.
3,000psi 7.5gpm each for (2) wire wheel brushes.

Wire Brush:

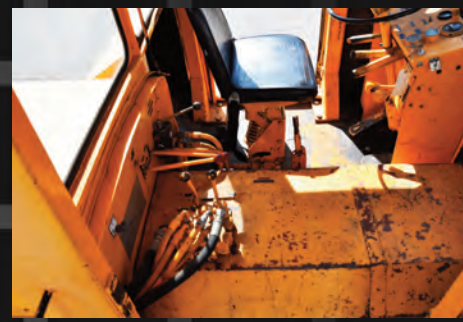
Two (2) self adjusting 10 inch rail brushes.



11415 Melrose Avenue • Franklin Park, Illinois 60131
T: (847) 451-1224 • F: (847) 451-1247 • E: sales@swingmastercorp.com
www.swingmastercorp.com

Rebuilds

Swingmaster can rebuild, recondition or retrofit your old **Speedswings**, **Pettibones** or **Swingmaster** equipment with updated body style, valves and controls. Save money and rebuild your older equipment.



Lease and Rental rates available from 1 week to 1 year.

Financing

- Excellent Rates
- 100% Financing
- Up to 5-Year Terms
- Financing for New, Used, or Rebuilt Equipment
- Top-Notch, Professional Service
- No financials required for amounts up to \$100,000



11415 Melrose Avenue • Franklin Park, Illinois 60131
T: (847) 451-1224 • F: (847) 451-1247 • E: sales@swingmastercorp.com
www.swingmastercorp.com

SWINGMASTER™ Attachments



AAR Coupler Train Brakes



Backhoe



Brush Cutter



Bucket



Cribbing Bucket



Forks



Magnet / Grapple Combo



Magnet and Coupler



Male Master Coupler



Sweeper



Spare Tire Carrier



Snow Removal



Telescopic Boom



Tie Exchanger



Track Cleaning Bucket



WARRANTY

Swingmaster offers the following types of extended service coverage for New Equipment: Power Train, PowerTrain + Hydraulic, Full Machine, Component Coverage (For example, engine only or a combination of engine and transmission)

Swingmaster offers the following extended service coverage for Used Equipment: Power Train or Power Train + Hydraulics. Our Used Equipment program provides a maximum of \$250 travel time and mileage consideration per claim and \$0 deductible per claim

On New Equipment the available terms range from 2 years / 2000 hours to 5 years / 7500 hours. 10,000 hour terms are available upon request.

On Used Equipment the available terms range from 3 months / 375 hours to 3 years / 3500 hours. Hours on Used Equipment are in addition to the existing hours currently registered to the unit.



11415 Melrose Avenue • Franklin Park, Illinois 60131
T: (847) 451-1224 • F: (847) 451-1247 • E: sales@swingmastercorp.com
www.swingmastercorp.com